

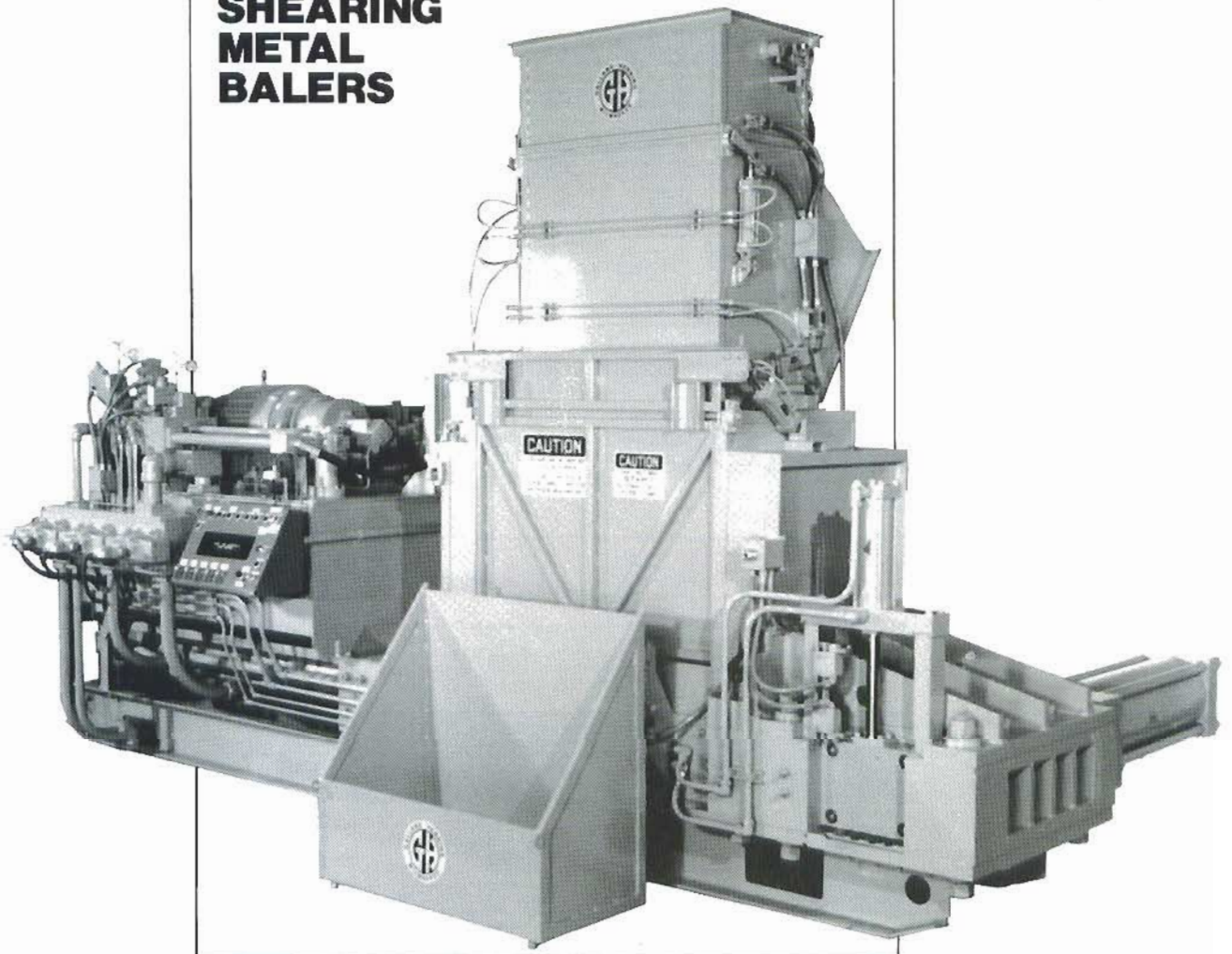
● GALLAND



HENNING

SERIES DCS

**DUAL COMPRESSION
SHEARING
METAL
BALERS**

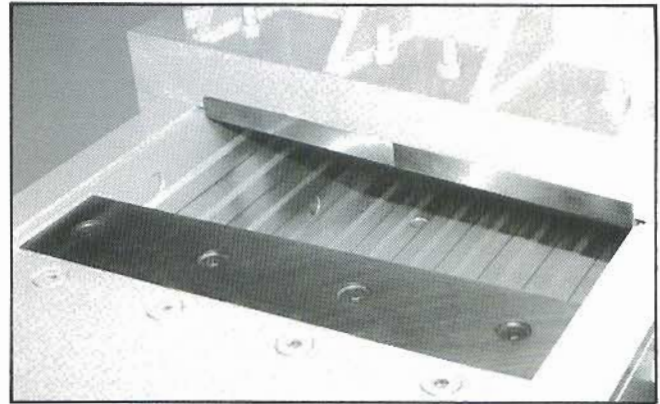


GALLAND HENNING NOPAK, Inc.

P.O. Box 15500 ■ 1025 South 40th Street ■ Milwaukee, Wisconsin 53215
PHONE: 414-645-6000 ■ FAX: 414-645-6048

SHEARING FIRST COMPRESSION RAM

- Eliminates pre-compaction of bulky material.
- Shears off material extending above and/or into the loading chute.
- Material can be loaded on top of first compression head while previous charge is being baled.
- Increases production rates.
- Reduces idling time between charges.
- Multiple charging of light metal.

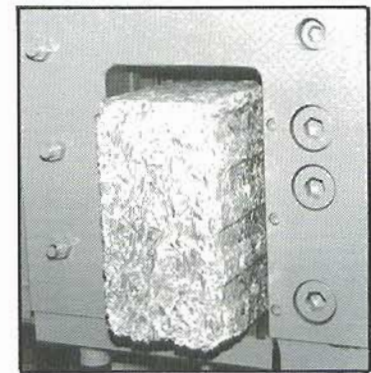


APPLICATIONS

- Bulky scrap, wire, light extrusions, aluminum, copper, light steel.
- Skeletons — aluminum and steel.
- Can and lid scrap — aluminum and steel.
- Foil.

BALE EJECTION

- Side ejection.
- Gate opening 25% larger than bale — eliminates potential jamming if chamber is overcharged.
- Replaceable wear bars.



GENERAL SPECIFICATIONS AND DIMENSIONS

Model	Bale Size •	Charging Box Dimensions	Clear Opening	Bales Per Hour 100% Efficient ★	Bale Weight in Lbs./Ft.	
					Steel	Aluminum
DCS 10	8 x 12 x Variable	60 Long, 24 Wide 12 Deep, 10 Cu. Ft.	42 Long 24 Wide	72	80 to 115	25 to 50
DCS 17	12 x 12 x Variable	75 Long, 30 Wide 12 Deep, 17 Cu. Ft.	50 Long 30 Wide	72	122 to 170	40 to 75
DCS 40	14 x 14 x Variable	112 Long, 42 Wide 14 Deep, 40 Cu. Ft.	72 Long 42 Wide	72	166 to 233	60 to 105
DCS 55	16 x 16 x Variable	120 Long, 50 Wide 16 Deep, 55 Cu. Ft.	84 Long 50 Wide	72	217 to 305	75 to 135
DCS 95	20 x 20 x Variable	138 Long, 60 Wide 20 Deep, 95 Cu. Ft.	96 Long 60 Wide	70	340 to 475	115 to 215

NOTE: All dimensions and specifications given in this catalog are for general reference only and not for construction. Certified drawings are to be obtained from Galland Henning's engineering department for construction and installation.

- Bale sizes other than those listed are available to meet specific requirements.



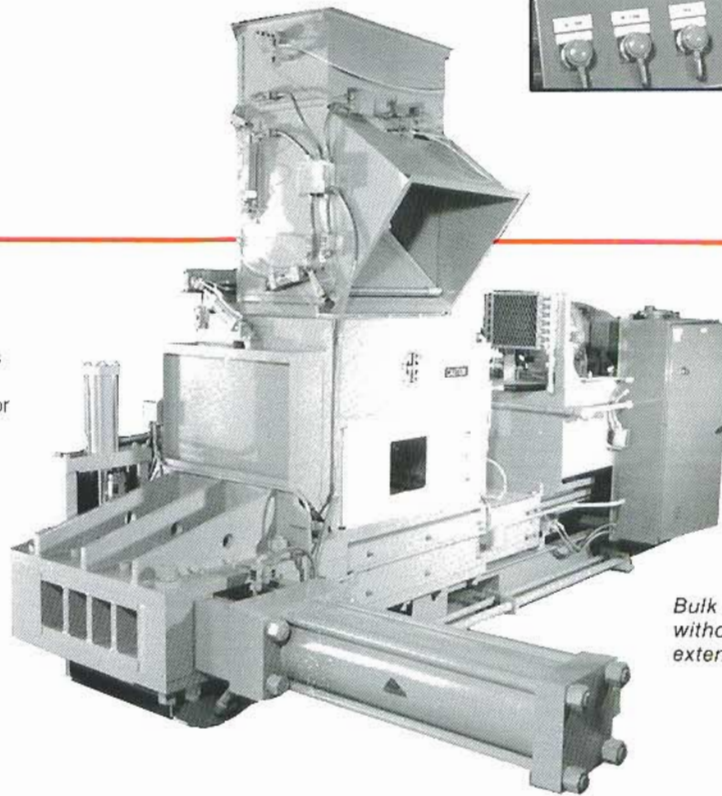
PROGRAMMABLE CONTROLS

- Ease and flexibility of programming, editing, monitoring and trouble shooting.
- Console Display:
 - Prompts operator to get baler into automatic operation.
 - Gives machine status and trouble shooting diagnostics.



FEATURES

- Keyed and bolted design assures proper frame alignment and many years of dependable service.
- The entire charging box and all ram heads have replaceable abrasive resistant steel plates held in place with "through" bolts, for ease of replacement.
- Fully assembled and tested prior to shipment reducing installation time.
- Bale sizes from 8 x 12 x variable to 20 x 20 x variable.
- High efficiency pumping unit.
- Hydraulic pressure controller with digital readout.
- No special foundation required.
- Automatic operation.



OPTIONS

- Weigh hopper with rear diverter.
- Bulk hopper with rear diverter.
- Side hopper.

Bulk hopper shown without chute extension.

First Compression Cylinder	Second Compression Cylinder	Horsepower *	Overall Length †	Overall Width †	Overall Height †	Shipping Weight (Lbs.)
6 Diameter (2) 69 Tons Force 470 PSI Face Pressure	10 Diameter 98 Tons Force 2040 PSI Face Pressure	25	135	90	90	13,000
8 Diameter (2) 123 Tons Force 684 PSI Face Pressure	12 Diameter 135 Tons Force 1875 PSI Face Pressure	50	240	125	90	29,000
9 Diameter (3) 238 Tons Force 809 PSI Face Pressure	14 Diameter 192 Tons Force 1960 PSI Face Pressure	75	276	150	108	53,000
9 Diameter (3) 238 Tons Force 595 PSI Face Pressure	16 Diameter 302 Tons Force 2359 PSI Face Pressure	100	300	166	108	68,000
12 Diameter (2) 340 Tons Force 566 PSI Face Pressure	16 Diameter 302 Tons Force 1510 PSI Face Pressure	150	320	180	108	80,000

* Horsepower and cycle times (bales/hour) other than those listed are available.

† Approximate dimensions only and are not for construction.

The specifications are subject to change without notice and without incurring responsibility to units sold previously.

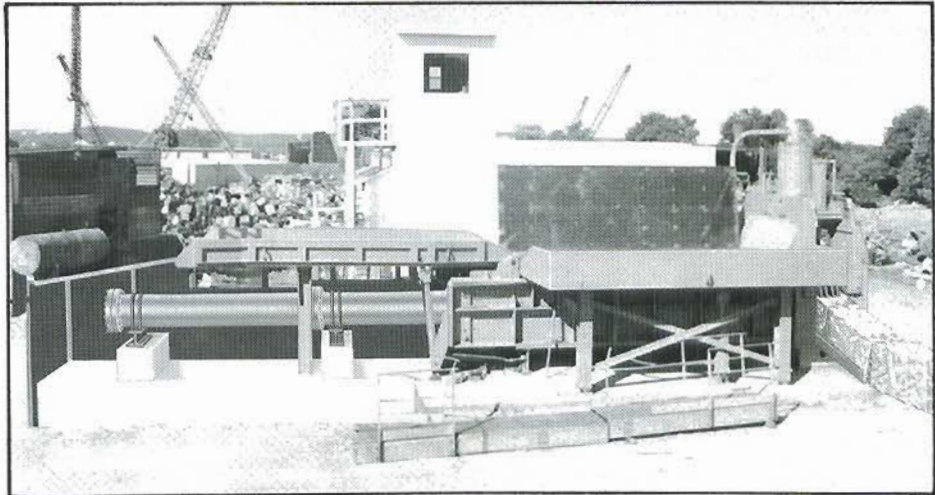


ADDITIONAL SCRAP RECYCLING EQUIPMENT

AUTOMATIC TRIPLE COMPRESSION BALERS

A perfect solution for bulky and hard to handle materials.

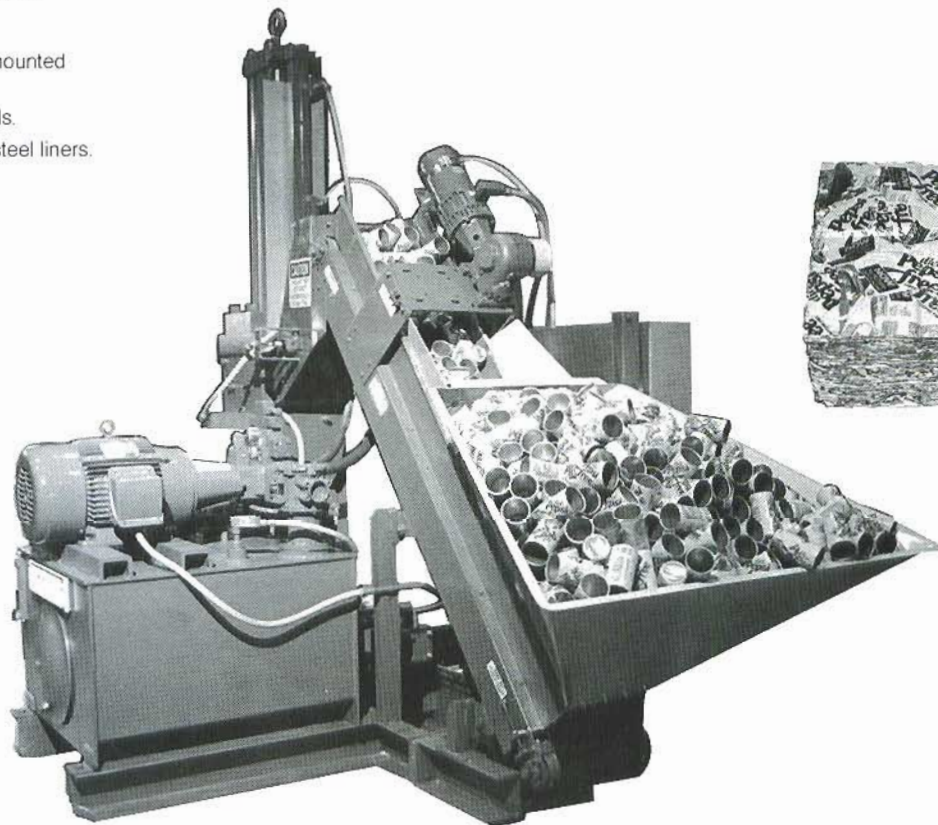
- Charging boxes from 80 to 800 cubic feet.
- Bale sizes from 12 x 12 x variable to 28 x 28 x variable.
- Side and end hoppers available.
- Patented vertical gate.
- Automatic cycle.
- High efficiency pumping units — electrically/hydraulically controlled.
- Easy to maintain.



PAK-A-CAN

Bales UBC's fast and economically into 11" x 11" x 8", 25# biscuits.

- Completely self-contained and mounted on skid.
- Solid-state programmable controls.
- Replaceable abrasion-resistant steel liners.
- Easily installed.



GALLAND HENNING NOPAK, Inc.

P.O. Box 15500, 1025 South 40th Street, Milwaukee, Wisconsin 53215
FAX 414-645-6048 PHONE 414-646-6000

© GALLAND HENNING NOPAK, INC.

Printed in U.S.A.