

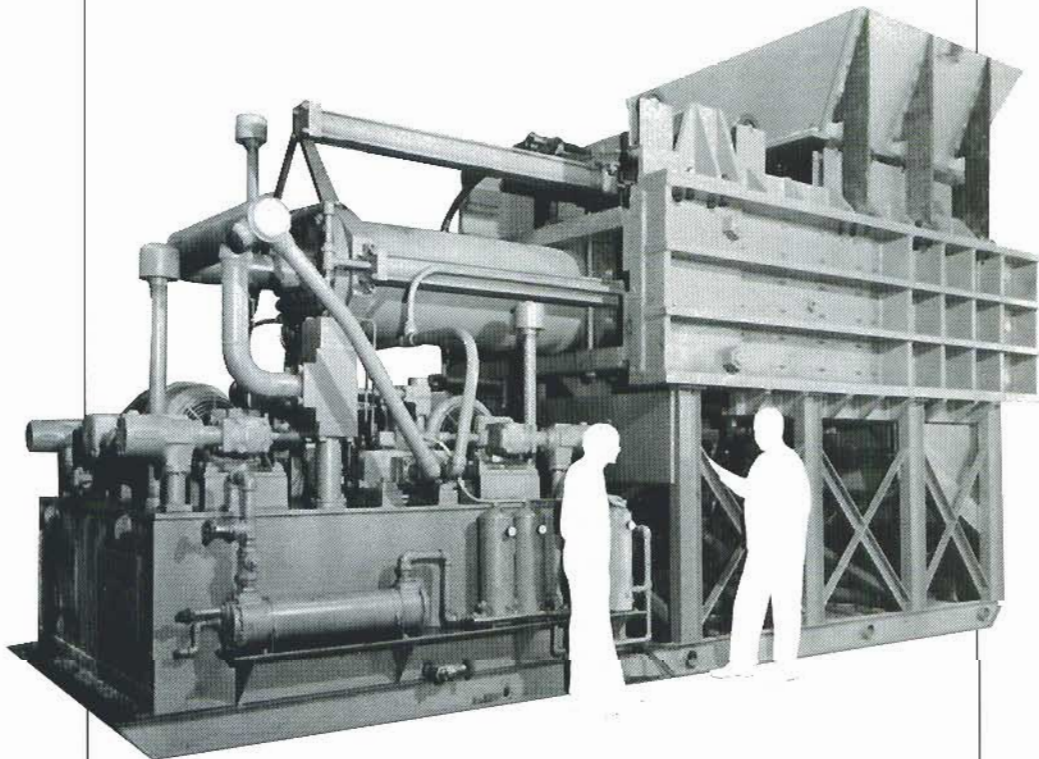
GALLAND



HENNING

MODEL 91-60

BLOCK BREAKER



GALLAND HENNING NOPAK, INC.

P.O. BOX 15500 ■ 1025 South 40th Street ■ Milwaukee, Wisconsin 53215

PHONE: 414-645-6000 ■ FAX: 414-645-6048



A TOUGH MACHINE FOR A TOUGH JOB.

- Very heavy duty construction
- All weldments stress relieved
- Charge box cover and ram head liners are replaceable
- Built with tough Nopak Square Head cylinders
- No expensive foundation required
- Sliding safety cover

STANDARD SPECIFICATIONS

SPECIFICATIONS	MODEL 91-60
Charging Box Dimensions	67" Long x 65" Wide x 36" Deep
Charging Box Volume	91 Cubic Feet
Charging Box Opening	67" Long x 65" Wide
Capacity per Cycle	1 to 3 blocks w/o transmission 2 blocks with transmission
Complete Cycle	60 Seconds
Cycles per hour @100% efficiency	60
Main Compression Cylinder	
Piston Diameter	20"
Force in Tons	314
Ramhead Face Pressure	270 P.S.I.
Bottom Door Cylinder	
Piston Diameter	4"
Top Door Cylinder	
Piston Diameter	4"
Total H.P. of Motors	100 H.P.-1200 RPM 230/460 Volt
Hydraulic System	
Gallons Required	675
G.P.M.	207
P.S.I.	2000
Area required for Block-Buster	10' x 20'
Area required for pump	12' x 15'
Block Breaker and Pumping Unit	
Total weight	75,000 lbs.

OPTIONAL EQUIPMENT

- Heavy duty take-away oscillating sorting conveyor
- Hot wash unit for cleaning broken material
- Stacking conveyor with "A" frame and swivel base

Block Breaker With Heavy Duty GH Power Unit

