

OPERATING AND MAINTENANCE INSTRUCTIONS

NOPAK HAND AND FOOT VALVES — DISC TYPE

Depending on the degree of preventive maintenance that is applied to your air or hydraulic circuit, there will be a time when repairs must be made in the valve assembly.

Removal of the four cap screws fastening the cap to the body will expose the bronze disc covering the drive spindle. Note the position of the disc with the body, then carefully lift the disc from the body so as not to nick or scratch sealing faces. You can now inspect both faces for wear or scratches that permit the air or hydraulics to bleed across the ports.



Determining that this be the cause, then replacement of disc and body will have to be made as a lapped seal unit. This type of damage is extreme for the trouble-free cycles that this valve delivers, and can be avoided with proper filtration of supply lines. Many customers stock replacement valves and when the quantity warrants, will return valves to the factory for refinishing of seal faces providing the damage is not too extensive. Next inspect the body and cap O-ring for nicks or tears and replace if necessary. If the valve is used for hydraulics, then the spindle O-ring should be replaced at the same time.

Spring return valves should be inspected for loss of spring torque and replaced if valve does not rotate properly. However, caution must be taken to remove or replace this preloaded spring. Before repairs or replacements are made to the valve, clean all internal parts to remove dirt particles that have entered, causing the repair.

Reassemble the valve in the reverse proper order with lubricant on the disc face and spindle shank. Clean lubricants can be either a petroleum oil, graphite grease or the commercial type "STP" spray or equal, which is used in NOPAK valve assembly.

Your valve now will provide more years of trouble-free operating cycles.

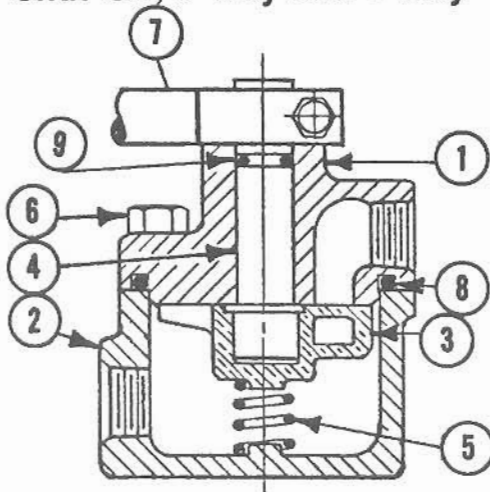
GALLAND HENNING NOPAK, Inc.

1025 South 40th Street ■ West Milwaukee, Wisconsin 53215
PHONE: 414-645-6000 ■ FAX: 414-645-6048
www.nopak.com ■ Email: sales@nopak.com

NOPAK[®] HAND AND FOOT VALVES — DISC TYPE

Replacement Parts Lists

Hand Operated Valves Shut-Off, 3-Way and 4-Way



INSTRUCTIONS FOR ORDERING

When ordering replacement parts, please give the following information: Name of part, part number, pipe size (if valve), type of valve (full description: shut-off valve, spring return valve), and if possible, the purchase order number on which the original valve was purchased.

PARTS LIST

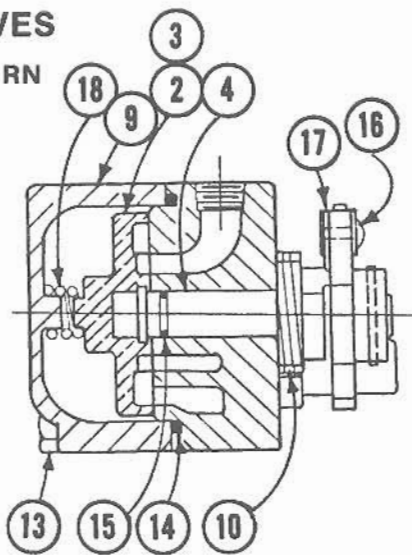
- | | | |
|-------------------|-------------------|--|
| 1. Valve body | 5. Disc spring | 8. O-ring (Flat gasket used on older models) check before ordering. |
| 2. Valve cap | 6. Cap screws (4) | 9. "O"-ring † |
| 3. Valve disc* | 7. Lever | |
| 4. Valve spindle* | | |

* Disc and spindle made in one piece on 1-1/4" 3-way valves and larger. Also all manifold valves.

† "O"-ring seal used only in valves for oil and water hydraulic service.

FOOT VALVES

MODEL F, R & RN



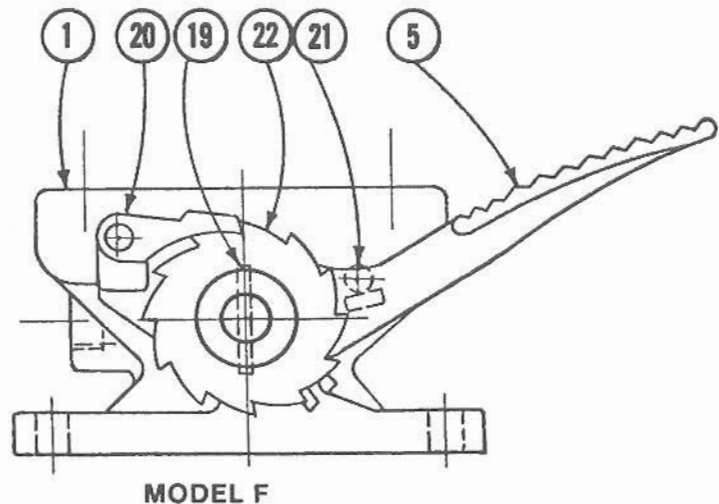
PARTS LIST

- | | |
|-----------------------------|---------------------------|
| 1. Valve body, Mod. F | 13. Cap screws (4) |
| 2. Valve disc, Mod. R & F † | 14. Body O-ring |
| 3. Valve disc, Mod. RN † | 15. Spindle O-ring |
| 4. Valve spindle | 16. Pawl Pin* |
| 5. Valve lever, Mod. F* | 17. Pawl spring* |
| 6. Valve body, Mod. RN | 18. Disc spring |
| 7. Valve body, Mod. R | 19. Spring pin |
| 8. Foot lever, Mod. RN | 20. Pawl* |
| 9. Cap | 21. Lever stop pin |
| 10. Lever spring, Mod. F | 22. Ratchet, Mod. F |
| 11. Foot Lever, Mod. R | 23. Lever spring, Mod. RN |
| 12. Lever spring, Mod. R | |

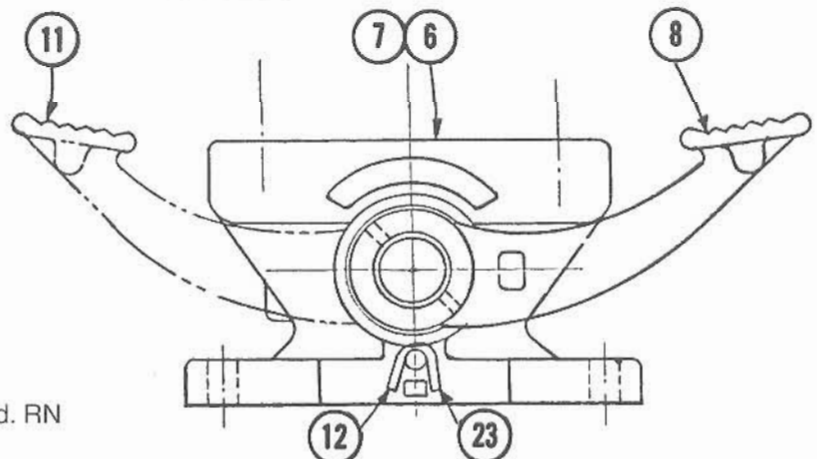
† All current R and F valves have 2-piece disc and spindle.

† 1/4", 3/8", 1/2" Model RN have 2-piece disc and spindle.

* Sold as assembly and specified as "LEVER COMPLETE".



MODEL F



MODEL R & RN

GALLAND HENNING NOPAK, Inc.

1025 South 40th Street ■ West Milwaukee, Wisconsin 53215

PHONE: 414-645-6000 ■ FAX: 414-645-6048

www.nopak.com ■ Email: sales@nopak.com