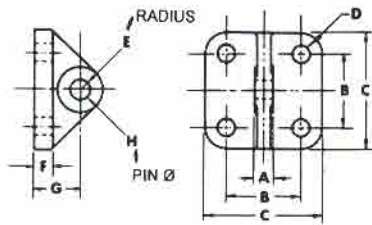


CYLINDER ACCESSORIES FOR CLASS 1 - 2 OR M NOPAK CYLINDERS

STANDARD MOUNTING BRACKET AND PIN

CYL. DIA.	A	B	C	D	E	F	G	BRACKET		MTG. PIN "H"	PIN	
								FORMER P/N	CURRENT P/N		FORMER P/N	CURRENT P/N
1-1/2	7/16	1-3/4	2-3/4	13/32	1/2	3/8	1-3/16	1430CY	1801L00	3/8	3253CY-1	3221L46-1
2-2-1/2-3	7/16	2	3-1/4	17/32	5/8	1/2	1-3/8	1630CY	1802L46	1/2	3253CY-3	3221L46-3
4-5	5/8	3-1/4	4-1/2	17/32	7/8	1/2	1-3/4	1796CY	1803L46	3/4	3253CY-4	3221L46-4
6	7/8	4-1/4	5-1/2	17/32	1-1/8	5/8	2	1797CY	1804L06	7/8	3253CY-5	3221L46-5
8	1	5	6-1/2	21/32	1-1/4	3/4	2-1/2	1798CY	1805L07	1	3253CY-6	3221L46-6
10	1-1/4	6	8	25/32	1-1/2	1	3	1799CY	1806L08	1-1/4	3253CY-7	3221L46-7
12	1-3/4	6-3/4	10	1-1/16	2	1-1/4	3-1/2	1800CY	1807L09	1-1/2	3253CY-8	3221L46-8
14	2-1/4	8	10-1/2	1-5/16	2-1/8	1-1/2	3-3/4	2958CY	1767L46	1-3/4	3253CY-9	3221L46-9



Mounting Brackets of high grade malleable iron or steel plate stock are designed to fit the blank end of Model E cylinders or into the slot of the clevises described below. Order by size and part number.

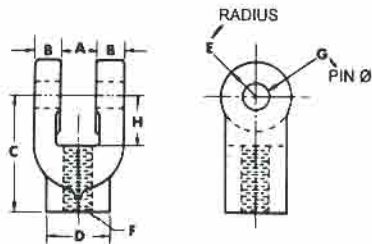
STANDARD FEMALE CLEVIS AND PIN

CYL. DIA.*	THREAD †† "F"	A	B	C	D	E	G	H	CLEVIS		MTG. PIN "G"	PIN	
									FORMER P/N	CURRENT P/N		FORMER P/N	CURRENT P/N
1-1/2-2	5/8-18	17/32	3/8	1-5/8	1	1/2	1/2	3/4	4330CY	1787L46	1/2	3253CY-3	3221L46-3
2-1/2-3	3/4-16	17/32	1/2	2	1-1/4	5/8	1/2	7/8	4331CY	1788L46	1/2	3253CY-3	3221L46-3
4-5	1-14	25/32	3/4	2-5/8	1-1/2	3/4	3/4	1-1/8	4332CY	1789L46	3/4	3253CY-4	3221L46-4
6	1-1/4-12	1-1/32	15/16	3-1/4	1-3/4	1-1/8	7/8	1-3/8	4333CY	1790L06	7/8	3253CY-5	3221L46-5
8	1-3/4-12	1-9/32	1	3-3/4	2-1/2	1-1/4	1	1-1/2	16989CY	1791L07	1	3253CY-6	3221L46-6
10	2-12	1-17/32	1-1/4	4-3/4	3	1-1/2	1-1/4	1-3/4	1373CY	1792L08	1-1/4	3253CY-7	3221L46-7
12-14†	2-1/2-12	2-1/32	1-1/2	5-7/8	3-1/2	1-3/4	1-1/2	2-1/8	1374CY	1793L46	1-1/2	3253CY-8	3221L46-8

*Indicates Class 1 and 2 cylinder diameter with Standard B-1 NF rod end which clevis will fit.

†For B-3 Rod only on 14" diameter.

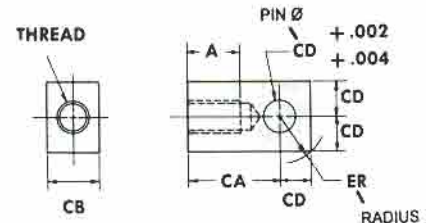
††1-1/2-12 thread clevis 7286L07 (4334CY) available. Dimensions on 1791L07 (18510CY) apply.



Clevises of high grade malleable iron are available for all standard model and size Class 1 and 2 cylinders. Clevises for any diameter cylinder are threaded for that particular standard B-1 rod end. Class 1 and 2 cylinders with over-size rod and Class M cylinders will therefore require a larger clevis unless the rod end is turned down. Be sure to specify when ordering. Special clevises available made to order.

STANDARD ROD EYE AND PIN

THREAD	A	CA	CB	CD	ER	ROD EYE		PIN	
						FORMER P/N	CURRENT P/N	FORMER P/N	CURRENT P/N
5/8-18	7/8	1-5/8	1	1/2	3/4	21789CY	1811L59	3253CY-3	3221L46-3
3/4-16	1-1/8	2-1/16	1-1/4	3/4	1-1/16	7061CY	1812L59	3253CY-4	3221L46-4
1-14	1-5/8	2-13/16	1-1/2	1	1-7/16	7062CY	1813L59	3253CY-6	3221L46-6
1-1/4-12	2	3-7/16	2	1-3/8	2	7063CY	1814L59	3253CY-4	3221L46-4
1-3/4-12	2-1/4	4	2-1/2	1-3/4	2-1/16	21790CY	1816L59	3253CY-9	3221L46-9
2-12	3	5	2-1/2	2	2-1/4	23464CY	1819L59	3253CY-11	3221L46-11
2-1/2-12	3-1/2	6-1/8	3	3	3-1/4	23465CY	1823L59	3253CY-7	3221L46-7



Rod eyes of mild steel are available for all standard model and size Class 1 and Class 2 cylinders with B-1 rod ends. Other sizes of rod eyes are also available. Pins for rod eyes are not furnished unless requested.



TYPICAL PIN STYLES