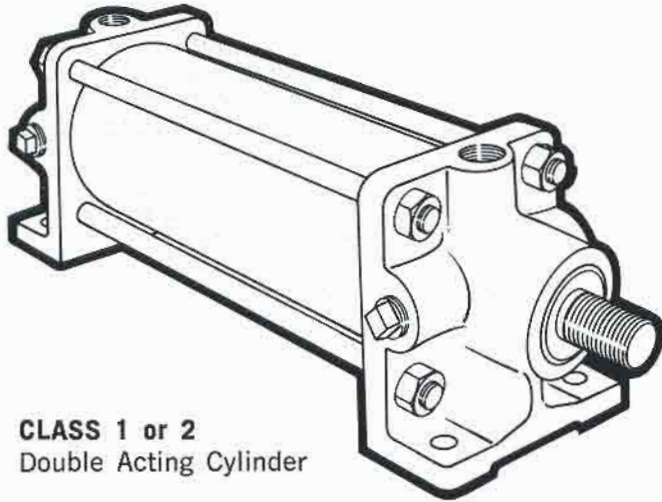


# N O P A K

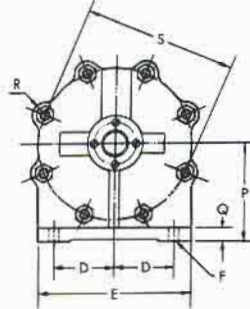
## MODEL A



**CLASS 1 or 2**  
Double Acting Cylinder

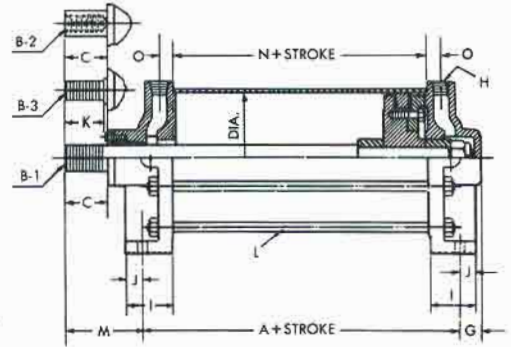
### PARALLEL BASE MOUNTING

Model "A" is used primarily in applications requiring straight-line push-pull motion where cylinder can be mounted on a flat surface. Intermediate supports can be furnished in cases where ratio of cylinder stroke to bore is large, to prevent excessive deflection and resulting wear on cups and packings.



End view illustrates 8 tie rod spacing incorporated in the 10", 12" and 14" bore sizes. See dimension L.

1½" thru 4" bore sizes use 4 tie rods, 5" thru 8" bore sizes use 6 tie rods, all evenly spaced and located symmetrically about inlet center line.



FOR FURTHER DETAIL  
SEE PAGE 14.

**TABLE OF DIMENSIONS — MODEL A — CLASS 1 or 2**

Bore	A	Rod* Dia.	B-1*	B-2*	B-3*	C	D	E†	F	G	H	I†	J	K	L	M	N	O	P	Q	R	S
1½	4⅞	⅝	⅝-18	½-20	⅜-24	1⅞	⅞	2¾	⅞	½	¼	1¾	⅞	⅞	4-⅞	1⅞	1⅞	⅝	1¾	⅝	⅝	2⅞
2	4⅝	⅝	⅝-18	½-20	½-20	1⅞	1	3	⅞	½	¼	2	½	⅞	4-⅞	1¾	1⅞	⅝	2⅞	½	½	2⅞
2½	4¾	¾	¾-16	½-20	½-20	1⅞	1⅞	3½	⅞	⅝	⅝	2⅞	⅝	1⅞	4-⅞	2⅞	1¾	⅝	2⅞	½	½	3½
3	4⅞	¾	¾-16	½-20	⅝-18	1⅞	1⅞	3⅞	⅞	¾	⅝	2⅞	⅝	1⅞	4-⅞	2⅞	1¾	⅝	2⅞	½	½	3⅞
4	5½	1	1-14	⅝-18	¾-16	1¾	1⅞	4⅞	⅞	⅞	½	2⅞	⅝	1½	4-½	3⅞	2	1	3	½	⅝	5⅞
5	5¾	1	1-14	⅝-18	¾-16	1¾	2⅞	5⅞	⅞	⅞	½	2½	⅝	1½	6-½	3¼	2	1	3¾	⅝	½	6⅞
6	5⅞	1¼	1¼-12	¾-16	1-14	2⅞	2⅞	7⅞	⅞	1⅞	¾	2⅞	⅝	1⅞	6-½	4¼	2⅞	1	4⅞	⅝	⅝	7⅞
8	7¼	1¾	1¾-12	1-14	1½-12	2½	4⅞	9¾	⅞	¾	1	2½	¾	2¼	6-⅞	4⅞	3½	1⅞	6⅞	¾	⅞	9½
10	8⅞	2	2-12	1¼-12	1½-12	3¼	4⅞	11⅞	⅞	1¾	1¼	3⅞	1¼	3	8-¾	5⅞	3⅞	1⅞	7½	1	1	11⅞
12	10	2½	2½-12	1½-12	2-12	4	5¼	14¾	1⅞	2⅞	1½	5	1⅞	3¾	8-⅞	7⅞	3¾	1⅞	9	1¼	1⅞	14¾
14	10¼	2¾	2¾-12	1¾-12	2½-12	4	6½	17	1⅞	3	2	5¼	2	3¾	8-⅞	7⅞	3¾	2	10¼	1½	1⅞	17

\*A ¼" oversize rod (OB), standard in the 8" bore size, can be furnished using standard head castings. Rod end extension and related dimensions will therefore vary accordingly. See table, page 11. Dimensions shown in this catalog may be altered without notice.

†This is a rough dimension and should not be used for locating purposes.

FOR 16" DIAMETER, AND LARGER,  
REFER TO CATALOG NO. 106.