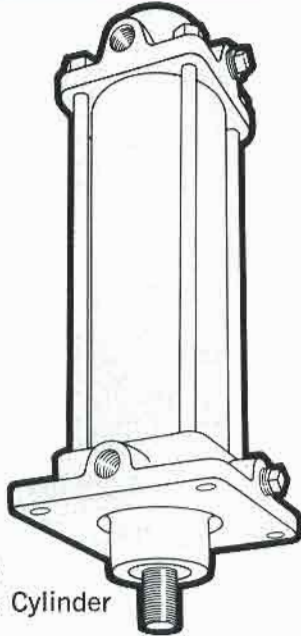
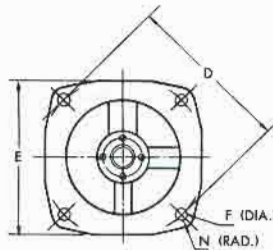
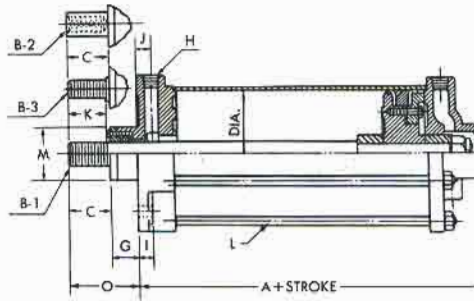


N O P A K

MODEL D



CLASS 1 or 2
Double Acting Cylinder



NOTE: 4-Hole Mounting is used on Model D Cylinders from 4" thru 14" in diameter.

FOR FURTHER DETAIL SEE PAGE 14.

NOTE: 2-Hole Mounting is used on Model D Cylinders from 1½" to 3" in diameter.

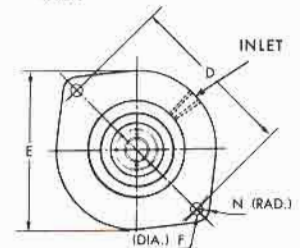


TABLE OF DIMENSIONS – MODEL D – CLASS 1 or 2

Bore	A	Rod* Dia.	B-1*	B-2*	B-3*	C	D	E†	F	G	H	I	J	K	L	M†	N	O
1½	4	⅝	⅝-18	½-20	⅜-24	1⅛	3¼	3⅜	13/32	1	¼	½	½	⅞	4-⅝	2	½	2⅝
2	4½	⅝	⅝-18	½-20	½-20	1⅛	3¾	3⅜	13/32	⅞	¼	⅝	⅝	⅞	4-⅝	2	½	2
2½	5⅛	¾	¾-16	½-20	½-20	1⅜	4¾	4½	17/32	1⅜	⅝	⅝	¾	1⅛	4-⅜	2⅝	⅝	2¾
3	5½	¾	¾-16	½-20	⅝-18	1⅜	5¼	4⅞	17/32	1¼	⅝	⅝	¾	1⅛	4-⅜	2⅝	⅝	2⅝
4	6½	1	1-14	⅝-18	¾-16	1¾	7¾	6¾	17/32	1⅝	½	⅝	¾	1½	4-½	3	⅝	3⅝
5	6⅝	1	1-14	⅝-18	¾-16	1¾	7¾	7¼	17/32	1½	½	¾	⅞	1½	6-½	3	¾	3¼
6	7¾	1¼	1¼-12	¾-16	1-14	2⅞	9	8¼	17/32	1⅝	¾	¾	1	1⅞	6-½	3½	⅝	3¼
8	8⅝	1¾	1¾-12	1-14	1½-12	2½	10¾	10⅞	25/32	1⅞	1	⅞	1¼	2¼	6-⅝	4¼	⅞	4⅝
10	10¾	2	2-12	1¼-12	1½-12	3¼	13¼	12½	29/32	2	1¼	1⅞	1⅞	3	8-¾	4½	1	5¼
12	13⅝	2½	2½-12	1½-12	2-12	4	17½	16	1⅞	2⅝	1½	1½	1⅞	3¾	8-⅞	5½	1¼	6⅝
14	14¾	2¾	2¾-12	1¾-12	2½-12	4	20	18¾	1⅞	2⅞	2	1¾	2	3¾	8-⅞	5⅞	1½	6⅞

*A ¼" oversize rod (OB), standard in the 8" bore size, can be furnished using standard head castings. Rod end extension and related dimensions will therefore vary accordingly. See table, page 11. Dimensions shown in this catalog may be altered without notice.

†These are rough dimensions, except on the 8" diameter cylinder. For locating purposes allow approximately ¼" for clearance. Can be machined ¼" smaller than diameter shown at extra charge. The 8" diameter includes a machined hub 4.250 — .005 as standard.

FOR 16" DIAMETER, AND LARGER, REFER TO CATALOG NO. 106.