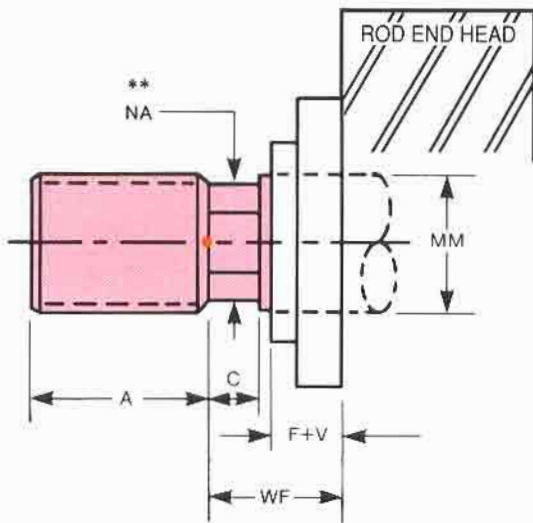


NOPAK

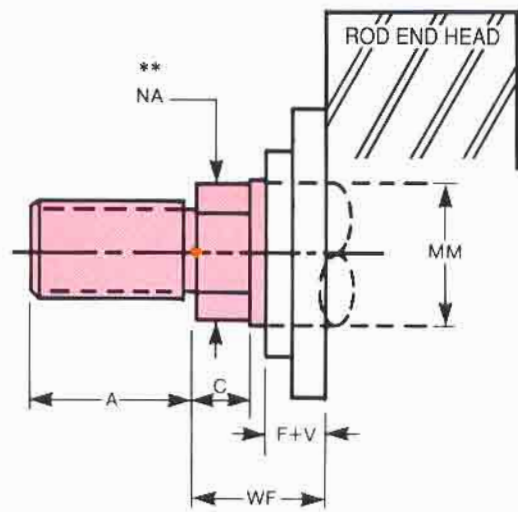
CLASS 6 CYLINDERS PISTON ROD END DIMENSIONAL DATA

NOTE: Standard (smallest) diameter rods in each bore size with standard (#4) thread are **STOCKED** in even-inch stroke increments 1" through 20". Cushioned and non-cushioned.
This translates to **MUCH QUICKER** delivery.

ROD TYPE NO. 1

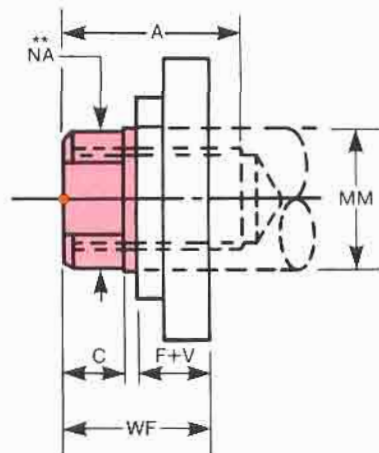


**ROD END TYPE
NO. 3
*NO. 4**



*TYPE NO. 4 THREAD IS SIZED FOR ROD CLEVIS AND EYE

ROD END TYPE NO. 5



*Type 4 thread sized for clevis & rod eye accessories

**Dimension NA is .060 under MM dia. dimension

† Dimension D is size across wrench flats

DIA. ROD MM	ROD END TYPE				A	C	D †	F + V	WF
	NO. 1	NO. 3	NO. 4*	NO. 5					
5/8	5/8-18	1/2-20	7/16-20	7/16-20	3/4	3/8	1/2	5/8	1
1	1-14	7/8-14	3/4-16	3/4-16	1 1/8	1/2	7/8	3/4	1 3/8
1 3/8	1 3/8-12	1 1/4-12	1-14	1-14	1 5/8	5/8	1 1/8	1	1 5/8
1 3/4	1 3/4-12	1 1/2-12	1 1/4-12	1 1/4-12	2	3/4	1 1/2	3/4	1 7/8
2	2-12	1 3/4-12	1 1/2-12	1 1/2-12	2 1/4	7/8	1 11/16	7/8	2
2 1/2	2 1/2-12	2 1/4-12	1 7/8-12	1 7/8-12	3	1	2 1/16	1 1/16	2 1/4
3	3-12	2 3/4-12	2 1/4-12	2 1/4-12	3 1/2	1	2 5/8	1 1/8	2 1/4
3 1/2	3 1/2-12	3 1/4-12	2 1/2-12	2 1/2-12	3 1/2	1	3	1 1/8	2 1/4
4	4-12	3 3/4-12	3-12	3-12	4	1	3 3/8	1 1/4	2 1/4
4 1/2	4 1/2-12	4 1/4-12	3 3/4-12	3 3/4-12	4 1/2	1	3 7/8	1 1/4	2 1/4
5	5-12	4 3/4-12	3 1/2-12	3 1/2-12	5	1	4 1/4	1 1/4	2 1/4
5 1/2	5 1/2-12	5 1/4-12	4-12	4-12	5 1/2	1	4 5/8	1 1/4	2 1/4

NOTE: Rod Threads are Class UNF-2A or 2B unless specifically quoted otherwise. For Plain Rod End (no threads, no wrench flats, etc.), consult factory for ordering information.