

# Class 1 SVR

Severe Service Hydraulic and Pneumatic Cylinders

---



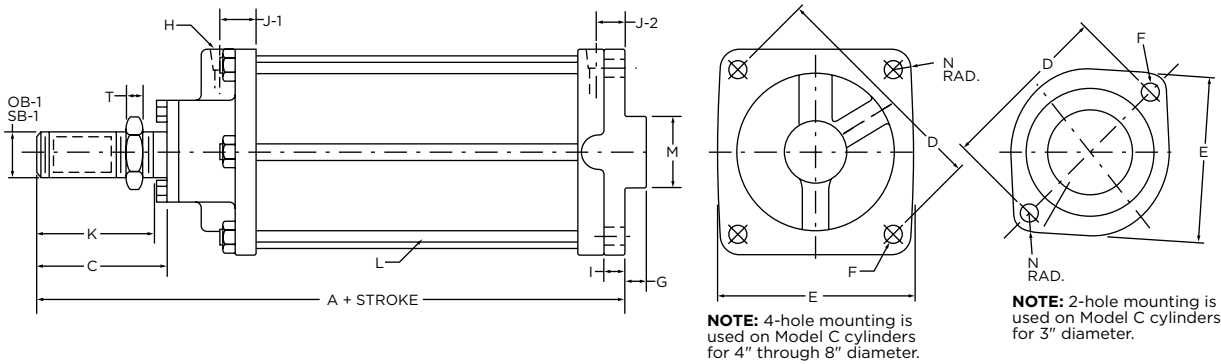
**TABLE OF CONTENTS**

Severe Service Cylinders ..... 20  
 Replacement Parts ..... 22  
 How To Order ..... 22

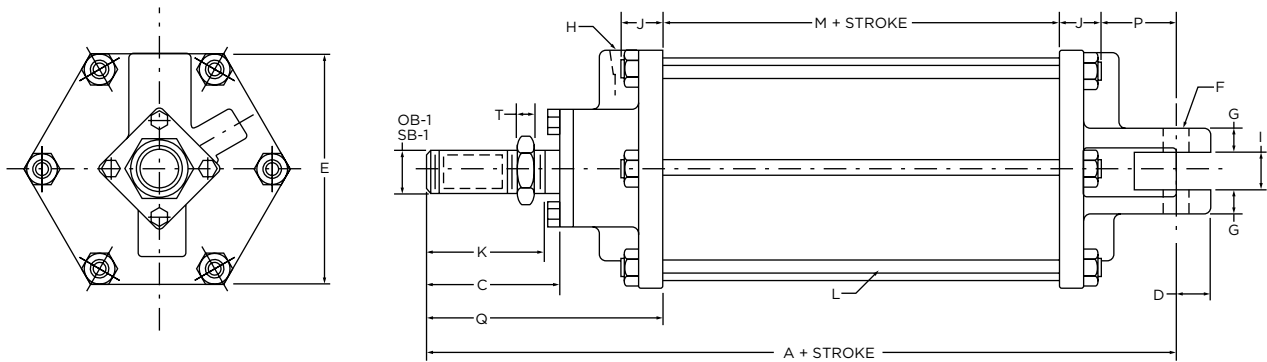
- Piston rod packing box is designed for double bearings and oversize rods with bolt-on steel plate packing retainers.
- Easily adjustable rod seals are a multiple stack split V-packing available in fabric-reinforced nitrile or fabric-reinforced Fluorocarbon.
- Piston rod has larger diameter (beyond the oversize Class 1, 2 or M).
- Piston rod thread lengths are longer than standard Class 1, 2, or M to incorporate a hex jam nut (employed to adjust and lock clevis or rod eye accessories).

**NOTE:** Applies to Models C, E, F, & H mountings only. For double rod bearing features in 10, 12, and 14 inch bores, refer to Class 1, 2, M Section.

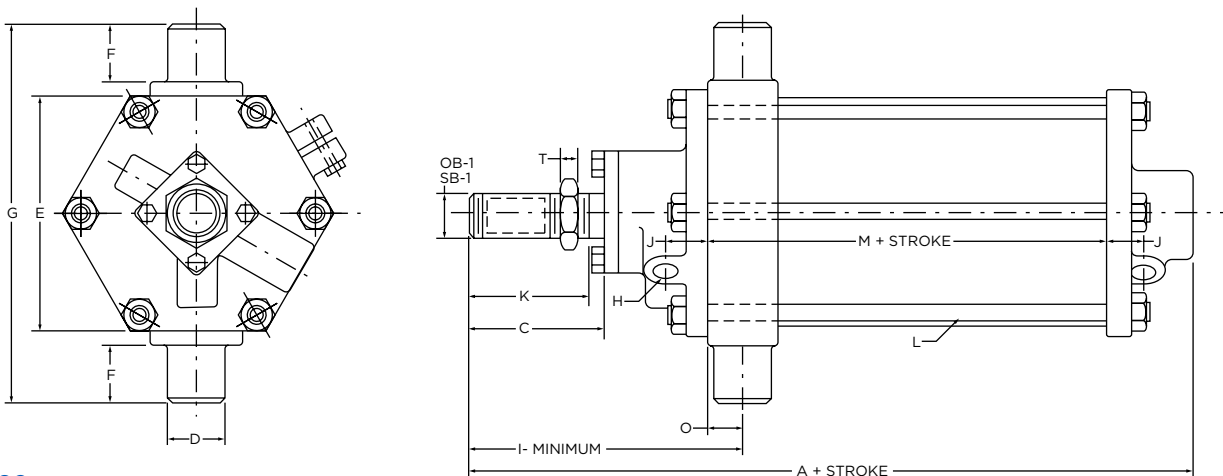
**MODEL C**



**MODEL E**

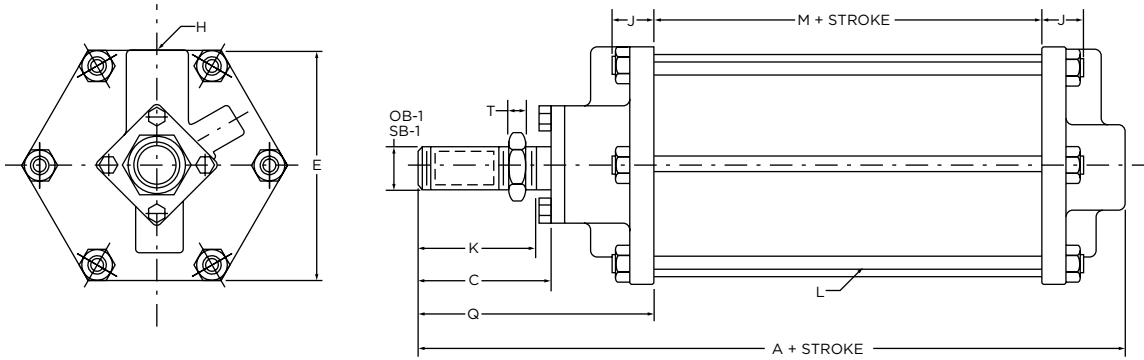


**MODEL F**



# SEVERE SERVICE CYLINDERS

## MODEL H



**Table 1** BASIC DIMENSIONS MODEL C

BORE	ROD DIA.	NO. 1 THREAD	A	C	D	E	F	G	H	I	J-1	J-2	K	L	M	N	T
3.00	1.00	1.00-14	8.625	2.375	5.250	4.875	.531	.750	.375	.625	.750	.750	2.125	(4) .375	2.125	.625	.500
	1.25	1.25-12	9.125	2.875									2.625				
4.00	1.25	1.25-12	10.000	2.875	7.750	6.750	.531	.875	.500	.625	1.000	.750	2.625	(4) .500	2.625	.625	.688
	1.50	1.50-12	10.625	3.500									3.250				
5.00	1.25	1.25-12	10.125	2.875	7.750	7.250	.531	.875	.500	.750	1.000	.875	2.625	(6) .500	2.625	.625	.688
	1.50	1.50-12	10.750	3.500									3.250				
6.00	1.50	1.50-12	11.688	3.500	9.000	8.375	.531	1.125	.750	.750	1.000	.875	3.250	(6) .500	3.000	.625	.875
	1.75	1.75-12	11.813	3.625									3.375				
8.00	2.00	2.00-12	15.125	4.500	10.750	10.875	.781	-	1.000	.875	1.125	1.250	4.250	(6) .625	-	.875	1.063
	2.25	2.25-12	15.250	4.625									4.375				

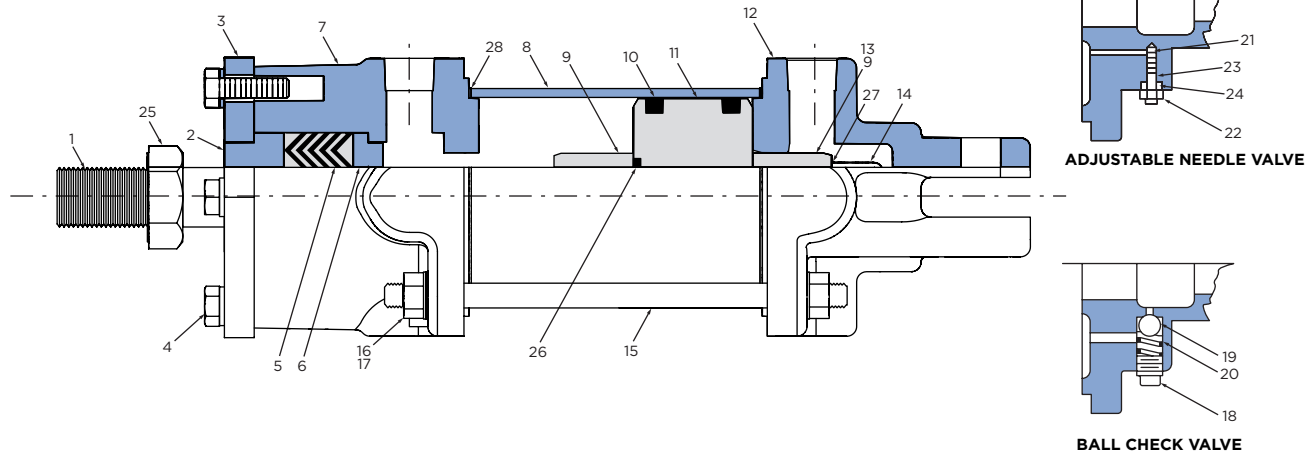
**Table 2** BASIC DIMENSIONS MODEL E

BORE	ROD DIA.	NO. 1 THREAD	A	C	D	E	F	G	H	I	J	K	L	M	P	Q	T
3.00	1.00	1.00-14	10.187	2.375	.625	3.750	.500	.500	.375	.500	.750	2.125	(4) .375	1.750	2.312	5.375	.500
	1.25	1.25-12	10.688	2.875								2.625					
4.00	1.25	1.25-12	11.875	2.875	.875	4.875	.750	.750	.500	.750	1.000	2.625	(4) .500	2.000	2.625	6.250	.688
	1.50	1.50-12	12.500	3.500								3.250					
5.00	1.25	1.25-12	12.000	2.875	.875	6.375	.750	.750	.500	.750	1.000	2.625	(6) .500	2.000	2.750	6.250	.688
	1.50	1.50-12	12.625	3.500								3.250					
6.00	1.50	1.50-12	14.063	3.500	1.125	7.250	.875	1.000	.750	1.000	1.000	3.250	(6) .500	2.625	3.375	7.063	.875
	1.75	1.75-12	14.187	3.625								3.375					
8.00	2.00	2.00-12	16.500	4.500	1.250	9.625	1.000	1.000	1.000	1.000	1.125	4.250	(6) .625	3.500	2.625	9.250	1.063
	2.25	2.25-12	16.625	4.625								4.375					

**Table 3** BASIC DIMENSIONS MODELS F & H

BORE	ROD DIA.	NO. 1 THREAD	A	C	D	E	F	G	H	I	J	K	L	M	N	O	T
3.00	1.00	1.00-14	9.375	2.375	.750	3.875	1.125	6.500	.375	6.000	.750	2.125	(4) .375	1.750	3.063	.625	.500
	1.25	1.25-12	9.875	2.875								6.500					
4.00	1.25	1.25-12	10.875	2.875	1.000	4.875	1.250	7.750	.500	7.000	1.000	2.625	(4) .500	2.000	3.500	.750	.688
	1.50	1.50-12	11.500	3.500								7.625					
5.00	1.25	1.25-12	11.000	2.875	1.000	6.875	1.250	9.000	.500	7.000	1.000	2.625	(6) .500	2.000	4.250	.750	.688
	1.50	1.50-12	11.625	3.500								7.625					
6.00	1.50	1.50-12	12.812	3.500	1.000	8.375	1.250	11.000	.750	7.813	1.000	3.250	(6) .500	2.625	4.875	.750	.875
	1.75	1.75-12	12.938	3.625								7.938					
8.00	2.00	2.00-12	15.000	4.500	1.500	10.875	1.250	12.750	1.000	10.250	1.125	4.250	(6) .625	3.500	6.375	1.000	1.063
	2.25	2.25-12	15.125	4.625								10.375					

**REPLACEMENT PARTS**



- |                                |                                      |                                    |
|--------------------------------|--------------------------------------|------------------------------------|
| <b>1</b> Piston Rod            | <b>12</b> Blank End Cylinder Head    | <b>22</b> Needle Valve Lock Nut    |
| <b>2</b> Packing Gland         | <b>13</b> Lock Sleeve (8" Diameter)* | <b>23</b> Needle Valve Packing     |
| <b>3</b> Gland Ring            | <b>14</b> Piston Lock Nut            | <b>24</b> Needle Valve Gland Ring  |
| <b>4</b> Gland Ring Screws     | <b>15</b> Tie Rods                   | <b>25</b> Hex Jam Nut              |
| <b>5</b> V-ring Packing        | <b>16</b> Tie Rod Nuts               | <b>26</b> O-ring                   |
| <b>6</b> Piston Rod Bushing    | <b>17</b> Lock Washers               | <b>27</b> Set-Screw (8" Diameter)* |
| <b>7</b> Rod End Cylinder Head | <b>18</b> Ball Check Plug            | <b>28</b> Gasket                   |
| <b>8</b> Cylinder Tube         | <b>19</b> Ball Check Ball            |                                    |
| <b>9</b> Cushion Sleeve        | <b>20</b> Ball Check Spring          |                                    |
| <b>10</b> Piston Cups          | <b>21</b> Needle Valve               |                                    |
| <b>11</b> Piston               |                                      |                                    |

\* To Be Replaced in Pairs

**HOW TO ORDER**

**When using this parts list for replacements, be sure to identify:**

1. Part by name and item number.
2. Diameter of cylinder.
3. Model of cylinder.
4. Serial number on NOPAK cylinder label.

**ORDERING CODE EXAMPLE**

**1 - CL1/SVR - 4 x 16 - E - S A - 1.00 - 1**

