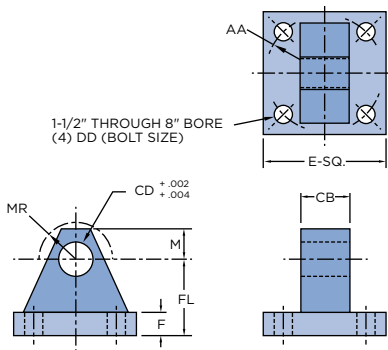


Class 3

High Pressure Square-Head Cylinders



EYE BRACKET

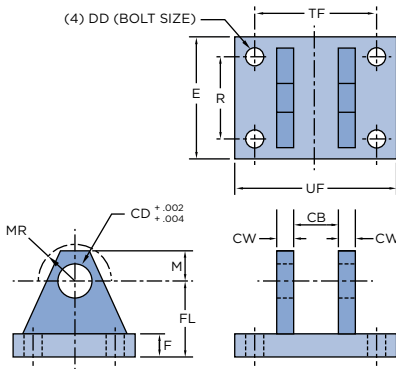


CYL. DIA.	E	F	M	AA	CB	CD	DD	FL	MR	PART NO.
1-1/2	2-1/2	3/8	1/2	2.30	3/4	1/2	3/8	1-1/8	5/8	2716 L47
2 - 2-1/2	3-1/2	5/8	3/4	3.61	1-1/4	3/4	1/2	1-7/8	7/8	2719 L32
3-1/4	4-1/2	7/8	1	4.60	1-1/2	1	5/8	2-3/8	1-1/4	2720 L33
4	5	7/8	1-3/8	5.40	2	1-3/8	5/8	3	1-5/8	2721 L34
5	6-1/2	1-1/8	1-3/4	7.00	2-1/2	1-3/4	7/8	3-3/8	2	2722 L35
6	7-1/2	1-7/16	2	8.10	2-1/2	2	1	3-15/16	2-3/8	2723 L36
7	8-1/2	1-5/8	2-1/2	9.30	3	2-1/2	1-1/8	4-5/8	3	2724 L37
8	9-1/2	2	2-3/4	10.61	3	3	1-1/4	5-1/4	3-1/4	2725 L38
10	12-5/8	2-3/8	3-1/2	•	4	3-1/2	1	6-3/8	3-1/2	2726 L39
12	14-7/8	2-7/8	4	•	4-1/2	4	1	7-1/2	4	2727 L40
14	17-1/4	3-3/8	5	•	6	5	1	9	5	2728 L41

For clevis bracket reference see models on page 38 and page 40.

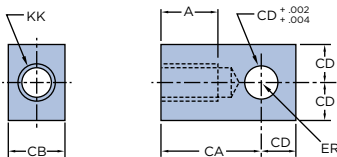
• = See page 52 for bolt hole location.

MOUNTING BRACKET



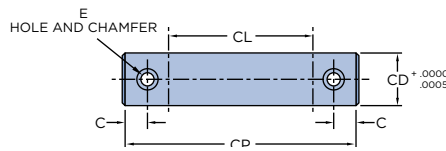
CYL. DIA.	E	F	M	R	CB	CD	CW	DD	FL	MR	TF	UF	PART NO.
1-1/2	2-1/2	3/8	1/2	1.63	3/4	1/2	1/2	3/8	1-1/8	5/8	2-3/4	3-1/2	2683 L47
2 - 2-1/2	3-1/2	5/8	3/4	2.55	1-1/4	3/4	5/8	1/2	1-7/8	7/8	3-3/4	4-3/4	2684 L47
3-1/4	4-1/2	7/8	1	3.25	1-1/2	1	3/4	5/8	2-3/8	1-1/4	4-1/2	5-3/4	2685 L47
4	5	7/8	1-3/8	3.82	2	1-3/8	1	5/8	3	1-5/8	5-1/2	6-3/4	2686 L47
5	6-1/2	1-1/8	1-3/4	4.95	2-1/2	1-3/4	1-1/4	7/8	3-3/8	2	7	8-1/2	2687 L47
6	7-1/2	1-7/16	2	5.73	2-1/2	2	1-1/4	1	3-15/16	2-3/8	7-1/2	9-1/4	2688 L47
7	8-1/2	1-5/8	2-1/2	6.58	3	2-1/2	1-1/2	1-1/8	4-5/8	3	8-1/2	10-1/2	2689 L47
8	9-1/2	2	2-3/4	7.50	3	3	1-1/2	1-1/4	5-1/4	3-1/4	8-3/4	10-3/4	2690 L47
10	12-5/8	2-3/8	3-1/2	9.62	4-1/8	3-1/2	2	1-3/4	6-3/8	3-1/2	12	15	2691 L47
12	14-7/8	2-7/8	4	11.45	4-5/8	4	2-1/4	2	7-1/2	4	14	18	2692 L47
14	17-1/4	3-3/8	5	13.36	6-1/8	5	3	2-1/4	9	5	17-3/4	22-1/2	2693 L47

EYE (FEMALE)



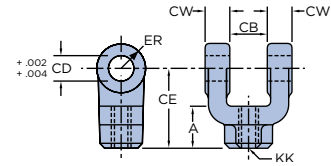
KK	A	CA	CB	CD	ER	PART NO.
7/16-20	3/4	1-1/2	3/4	1/2	5/8	1810 L59
3/4-16	1-1/8	2-1/16	1-1/4	3/4	1-1/16	1812 L59
1-14	1-5/8	2-13/16	1-1/2	1	1-7/16	1813 L59
1-1/4-12	2	3-7/16	2	1-3/8	2	1814 L59
1-1/2-12	2-1/4	4	2-1/2	1-3/4	2-1/16	1815 L59
1-7/8-12	3	5	2-1/2	2	2-1/4	1817 L59
2-1/4-12	3-1/2	5-13/16	3	2-1/2	2-7/8	1820 L59
2-1/2-12	3-1/2	6-1/8	3	3	3-1/8	1821 L59
3-1/4-12	4-1/2	7-5/8	4	3-1/2	3-7/8	1824 L59
4-12	5-1/2	9-1/8	4-1/2	4	4-7/16	1825 L59
5-1/2-12	7	11-7/8	6	5	5	1826 L59

PIVOT - PIN



CYL. DIA.	C	E	CD	CP	CL	PART NO.
1-1/2	3/16	1/8	1/2	2-3/8	1.8	3222 L47-1
2 - 2-1/2	1/4	3/16	3/4	3-1/4	2.6	3222 L47-2
3-1/4	1/4	3/16	1	3-3/4	3.1	3222 L47-3
4	1/4	3/16	1-3/8	4-7/8	4.1	3222 L47-4
5	1/4	3/16	1-3/4	5-7/8	5.1	3222 L47-5
6	5/16	1/4	2	6-1/8	5.2	3222 L47-6
7	5/16	1/4	2-1/2	7-1/8	6.3	3222 L47-8
8	5/16	1/4	3	7-1/8	6.3	3222 L47-7
10	3/8	1/4	3-1/2	9-1/4	8.0	3222 L47-9
12	3/8	1/4	4	10-1/4	9.0	3222 L47-10
14	3/8	1/4	5	13-1/2	12.3	3222 L47-11

CLEVIS (FEMALE)



KK	A	CB	CD	CE	CW	ER	PART NO.
7/16-20	3/4	3/4	1/2	1-1/2	1/2	1/2	2834 L59
3/4-16	1-1/8	1-1/4	3/4	2-3/8	5/8	3/4	2835 L59
1-14	1-5/8	1-1/2	1	3-1/8	3/4	1	2836 L59
1-1/4-12	2	2	1-3/8	4-1/8	1	1-3/8	2837 L59
1-1/2-12	2-1/4	2-1/2	1-3/4	4-1/2	1-1/4	1-3/4	2838 L59
1-7/8-12	3	2-1/2	2	5-1/2	1-1/4	2	2839 L59
2-1/4-12	3-1/2	3	2-1/2	6-1/2	1-1/2	2-1/2	2840 L59
2-1/2-12	3-1/2	3	3	6-3/4	1-1/2	3	2841 L59
3-1/4-12	4-1/2	4	3-1/2	8-1/2	2	3-1/2	2842 L59
4-12	5-1/2	4-1/2	4	10	2-1/4	4	2843 L59
5-1/2-12	7	6	5	12-3/4	3	5	2844 L59