

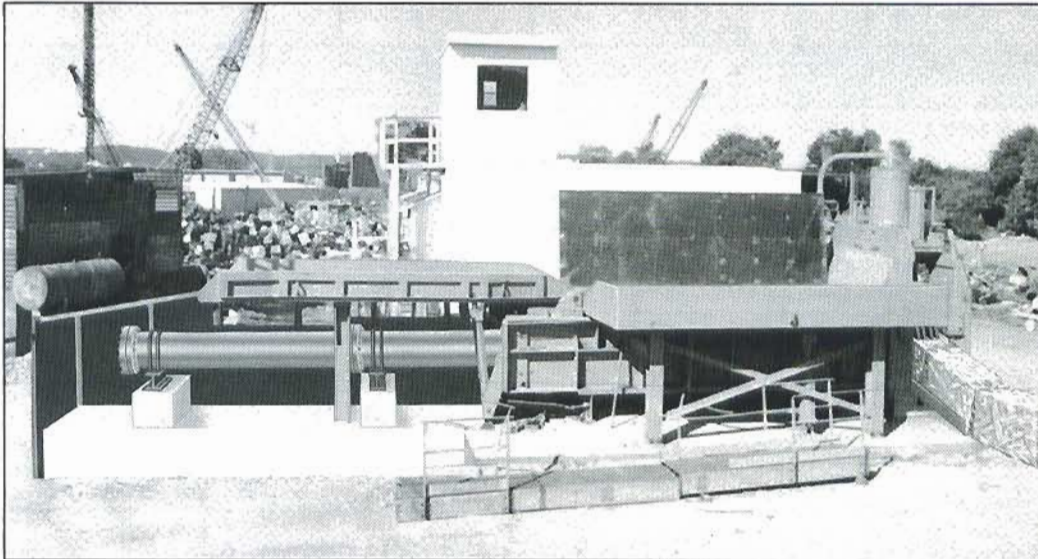
GALLAND



HENNING

SERIES FM-3

AUTO TRIPLE COMPRESSION BALERS



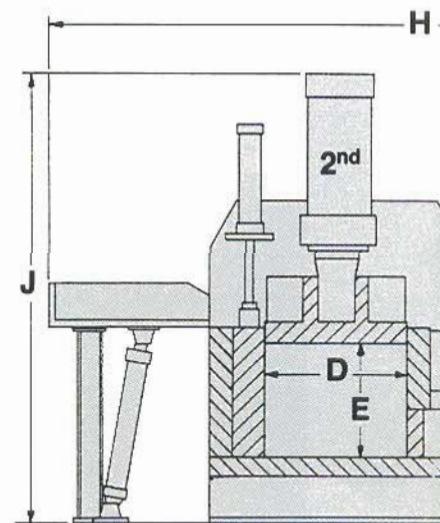
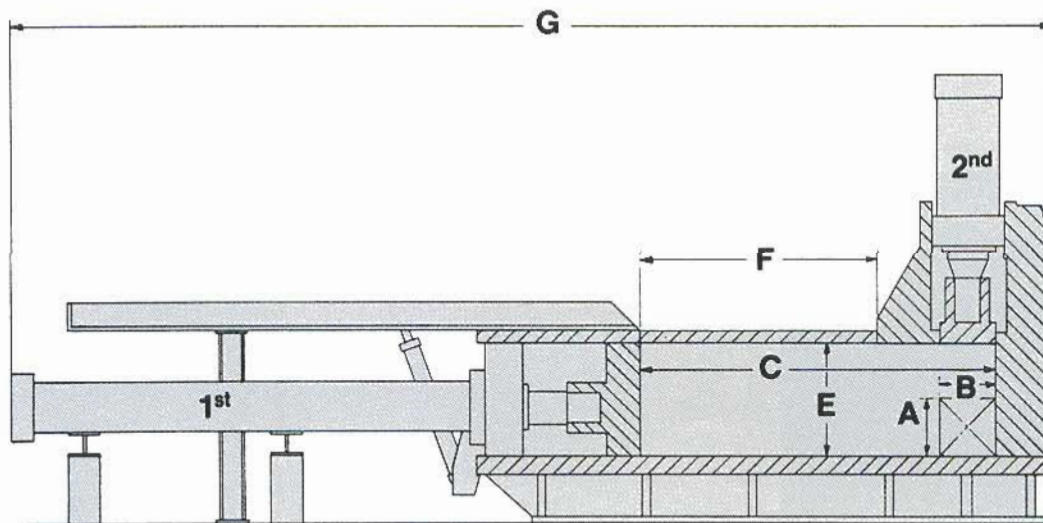
GALLAND HENNING NOPAK, Inc.

P.O. Box 15500 ■ 1025 South 40th Street ■ Milwaukee, Wisconsin 53215
PHONE: 414-645-6000 ■ FAX: 414-645-6048

FM-3 TRIPLE-COMPRESSION BALER

Model	Bale Size - A x B x V Variable	Charging Box Dimensions C x D x E	Clear Opening F x D	Bales Per Hour 100% Efficient ★	Bale Weight in Lbs.	First Compression Cylinder
FM3100	15" x 15" x V	8'-4" x 4' x 3' 100 Cu. Ft.	6' x 4'	60	242/15" Cube	12" - 136 Tons
FM3160	16" x 16" x V	10'-2" x 4'-6" x 3'-6" 160 Cu. Ft.	7'-9" x 4'-6"	60	294/16" Cube	14" - 185 Tons
FM3300	20" x 20" x V	14'-8" x 4'-6" x 5' 330 Cu. Ft.	11' x 4'-6"	45	514/20" Cube	14" - 230 Tons
FM3500	24" x 24" x V	15' x 6'-8" x 5' 500 Cu. Ft.	11' x 6'-8"	48	940/24" Cube	15" - 265 Tons
FM3600	24" x 24" x V	19' x 6'-8" x 5' 630 Cu. Ft.	15' x 6'-8"	48	990/24" Cube	15" - 265 Tons
FM3700	24" x 24" x V	21' x 6'-8" x 5' 700 Cu. Ft.	17' x 6'-8"	48	990/24" Cube	15" - 265 Tons
FM3800	24" X 24" X V	24' x 6'-8" X 5' 800 Cu. Ft.	20' X 6'-8"	48	1190/24" Cube	15" - 309 Tons
FM3800-2	28" x 28" x V	24'-4" x 6'-8" x 5' 810 Cu. Ft.	20' x 6'-8"	48	1575/28" Cube	15" - 309 Tons

NOTE: All dimensions and specifications given in this catalog are for general reference only and not for construction. Certified drawings are to be obtained from Galland Hennings' engineering department for construction and installation.





GENERAL SPECIFICATIONS AND DIMENSIONS

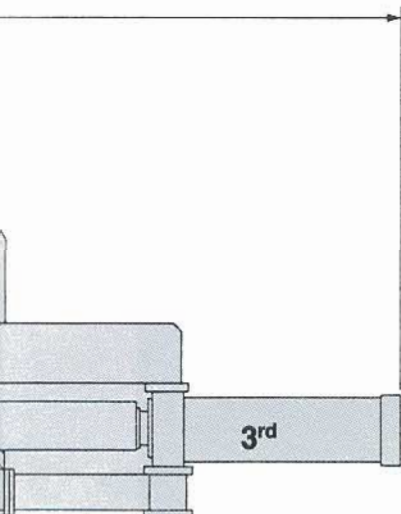
	Second Compression Cylinder	Third Compression Cylinder	Horsepower ★	Overall Length G†	Overall Width H†	Overall Height J†	Shipping Weight (Lbs.)
	16" – 241 Tons	16" – 241 Tons	200	21'-0"	15'-0"	12'-0"	99,100
	18" – 305 Tons	18" – 305 Tons	200	26'-0"	19'-0"	12'-0"	158,000
	20" – 471 Tons	20" – 471 Tons	200	37'-0"	21'-0"	16'-0"	225,000
	22" – 570 Tons	22" – 570 Tons	300	38'-0"	29'-0"	16'-0"	315,000
	23" – 623 Tons	23" – 623 Tons	300	45'-0"	29'-0"	16'-0"	380,000
	23" – 623 Tons	23" – 623 Tons	300	49'-0"	29'-0"	16'-0"	415,000
	23" – 727 Tons	23" – 727 Tons	400	55'-0"	29'-0"	16'-0"	420,000
	23" – 727 Tons	23" – 727 Tons	400	55'-0"	29'-0"	16'-0"	430,000

★ Horsepower and cycle times (bales/hour) other than those listed are available.

† Approximate dimensions only and are not for construction.

The specifications are subject to change without notice and without incurring responsibility to units sold previously.

● Bale sizes other than these listed are available to meet specific requirements.



GALLAND HENNING FM-3 BALERS ARE RUGGED, POWERFUL, AND ENGINEERED TO OPERATE ECONOMICALLY

- Available with pre-compression cover or automatic shearing.
- Charging boxes from 100 cu.ft. to 800 cu.ft. up to 20 ft. long.
- Bale sizes from 15"x15" to 28"x28" x variable, weighing in excess of 4000 lbs.
- Available with either end hoppers, side hoppers, or both.
- All welded steel construction.
- All weldments stress relieved prior to machining.
- Replaceable (thru-bolted) abrasive steel liners on box and ramheads.
- Main rams are forged steel and flame hardened to prevent scoring.
- Stuffing boxes are equipped with replaceable rod wipers, packings and bronze bearings.
- All auxiliary cylinders are NOPAK Class 3 design.



DUAL HOPPER VERSATILITY

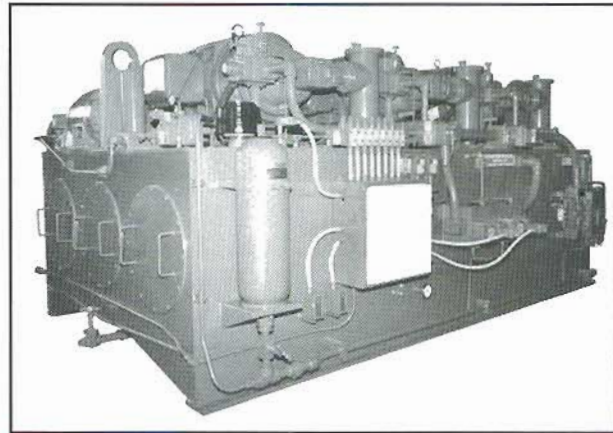
Galland Henning Series FM-3 Balers are designed to process large and bulky scrap without prior preparation.

- Dual hopper versatility offers maximum efficiency in loading all types of scrap.
- Wide gauge corrugations on the box liner and ramhead reduces the problem of "stickers".
- All stuffing boxes are equipped with replaceable rod wipers, packings and bronze bearings.



PUMPING UNITS

- Designed for quiet, high-production operation with a minimum of power loss using piston or vane-type pumps, or a combination of both.



BALE DELIVERY

- Patented vertical self-cleaning gate is designed to prevent jams due to occasional overcharging.

